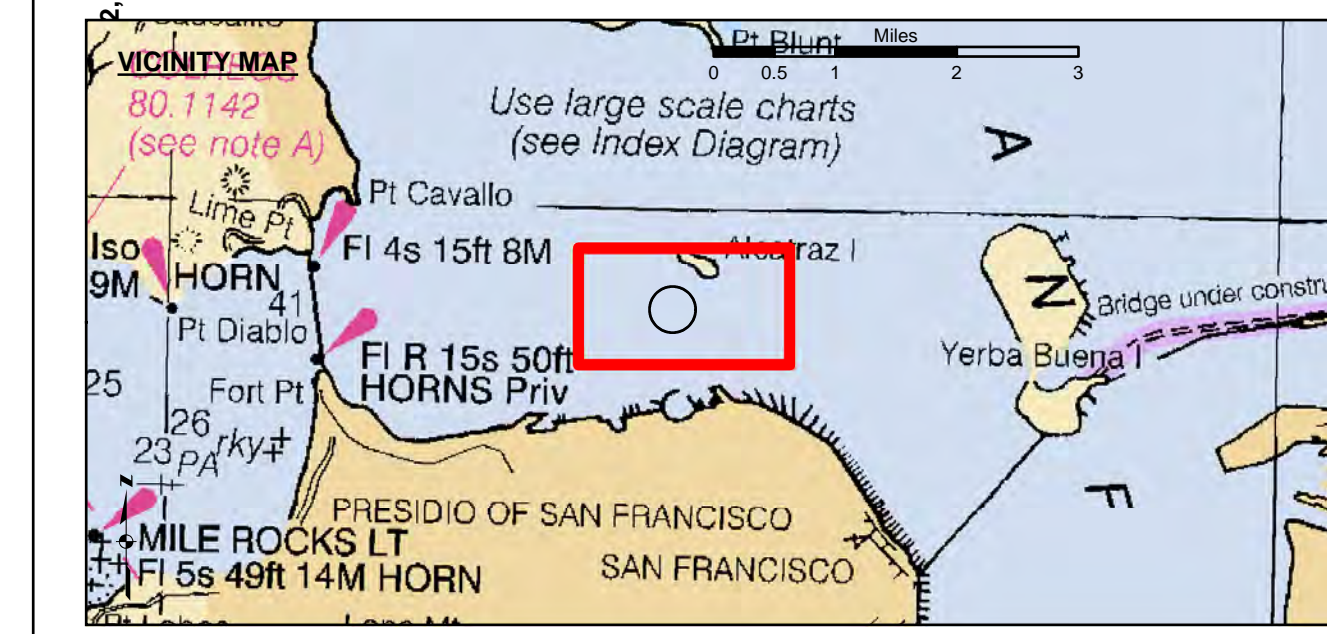


LAMBERT COORDINATES			
POINT	X	Y	
U.S.G.S. MON: 57	ELEV: - 14.00	6,005,367	2,123,290
TRANSAMERICA BUILDING	6,011,912	2,117,586	
1,000 FT. RADIUS	6,005,935	2,127,235	
ALCATRAZ DISPOSAL SITE - (SF-11)			
ALCATRAZ LIGHT	6,008,552	2,129,010	
ALCATRAZ BUDY	6,008,367	2,127,186	



- Federal Navigation Channel
- Shoaling Area
- Placement Area
- Anchorage Area
- Wreck Area
- Submerged Wreck
- Zone III Angle Points
- Beacon, General
- Obstruction Point
- Navigation Buoy
- Navigation Buoy
- Shoalest Sounding\*
- Contour Lines
- Every 10'
- 20' to -120'

NOTES:  
 HORIZONTAL COORDINATE SYSTEM:  
 NORTH AMERICAN DATUM OF 1983 (NAD83), PROJECTED TO THE STATE PLANE COORDINATE SYSTEM (SPCS), CALIFORNIA ZONE III. DISTANCE UNITS IN U.S. SURVEY FEET.

VERTICAL DATUM:  
 SOUNDINGS ARE SHOWN IN FEET AND INDICATE DEPTHS BELOW MEAN LOWER LOW WATER.

THE INFORMATION DEPICTED ON THIS MAP REPRESENTS THE RESULTS OF A SURVEY CONDUCTED ON THE DATE INDICATED AND CAN ONLY BE CONSIDERED TO REPRESENT THE GENERAL CONDITION EXISTING AT THAT TIME.

BASE MAPS ARE USDA NAIP 2010.

\*SHOALEST SOUNDING PER QUARTER PER REACH

DRAWING NOT TO BE USED FOR NAVIGATION. ONLY CHANNEL CONDITION AT DATE OF SURVEY. THE LOCATION OF ALL NAVIGATION AIDS ARE BASED ON INFORMATION PROVIDED BY THE U.S. COAST GUARD. BUOY LOCATIONS REPRESENT THE POSITION OF THE SINKER ONLY.

SOUNDINGS WERE TAKEN BY FATHOMETER AND ARE SHOWN TO THE NEAREST TENTH OF A FOOT. SOUNDINGS ARE BASED ON THE DATUM OF MEAN LOWER LOW WATER AT THE LOCALITY.

SURVEYED BY THE CORPS OF ENGINEERS.

THE PROJECT DEPTH IS -40 FEET AT MLLW.

PLANE GRID AND COORDINATES ARE BASED ON LAMBERT PROJECTION, NAD 83, ZONE III CALIFORNIA AS DESCRIBED IN SPECIAL PUBLICATION NO. 235, PUBLISHED BY THE NATIONAL OCEAN SURVEY.

HORIZONTAL GPS CONTROL:  
 COAST GUARD D-BEACON

VERTICAL CONTROL:  
 BENCHMARK: 180 1936  
 PID: HT0702  
 MLLW = 3.972m(13.03ft)

NOAA STATION 9414290  
 TIDE GAUGE LOCATION: SAN FRANCISCO

**US Army Corps of Engineers**  
 San Francisco District  
 1455 Market Street  
 San Francisco, CA 94103

**DISCLAIMER**  
 The United States Government furnishes this information as a service to its customers. It is provided as is, without warranty of any kind, express or implied, including the accuracy, completeness, or reliability of the information. The user is responsible for the results of any application of this information. The user is responsible for the results of any application of this information. The user is responsible for the results of any application of this information.

Chart Date: Sep 11, 2018  
 Designed by: PDT  
 Plotted by: PDT  
 Checked by: PDT  
 Drawn by: PDT

CALIFORNIA  
**ALCATRAZ DISPOSAL SITE-SF-11**  
 CONDITIONAL SURVEY  
 28 AUGUST 2018

**Sheet Reference Number 1 of 1**